



**TABLELANDS
UNIVERSITY
CENTRE**
HIGHER EDUCATION SUPPORT BY **VPG**



• **COMMUNITY PARTNERSHIPS** •

A MESSAGE FROM

Maryanne Tranter, VPG CEO

For 25 years, Vocational Partnerships Group (VPG) has been fostering growth and success for children, youth, and families in Far North Queensland. As a not-for-profit, community-based organisation firmly embedded in the greater Tablelands region, we believe in equity in education — which is why we are committed to enhancing educational opportunities in regional areas.

To help locals achieve their academic aspirations, VPG established the Tablelands University Centre (TUC) in 2023. Within the first 12 months, interest and student uptake across the Tablelands exceeded our expectations - a clear sign of demand and the value of local access to higher education.

Building on this success, we expanded our impact with the launch of a new university study hub on the Cassowary Coast in 2024. This expansion reflects our continued commitment to making higher education more accessible to students in regional communities and ensuring they have the resources and support to succeed both academically and professionally.

The benefits of investing in higher education for regional and rural students are undeniable:

- Students who study locally are more likely to engage in the local workforce.
- Expanding access to a pool of highly trained and educated talent helps meet local workforce demands.

That's why strong local partnerships are critical to the success of our university centres.

We are grateful for the support provided by the Australian Government and Tablelands Regional Council. To build on this momentum and deliver the high-quality student experience our communities deserve, we are seeking additional in-kind and financial contributions.

Your investment will have a lasting impact, supporting students' personal and professional growth while contributing to the long-term development of our region. We invite you to make a tax-deductible donation to VPG, helping us close educational gaps and create equal opportunities for success.

Thank you for your consideration. Together, we can create a more sustainable, resilient regional economy - and a skilled, engaged local workforce.

Maryanne Tranter
Chief Executive Officer
Vocational Partnerships Group



Mayor Rod Marti, TRC

As Mayor of the Tablelands LGA, I am confident the establishment of the Tablelands University Centre will have a transformative impact on our community, bringing together education, training and workforce development in a way that will benefit everyone.

I believe it represents a significant turning point for our community and has the potential to revolutionize our region's approach to retaining youth and local community members equipped with highly sought-after skills and credentials. Creating equitable access to higher education will allow local residents to remain in community to pursue their aspirations and reach their full potential.

We will see significant flow on effects enhancing local skills and qualifications, leading to better job prospects, increased economic growth, and a more robust and agile workforce. This will be particularly beneficial in areas experiencing high workforce demand, including our health care, social assistance and education sectors.

I encourage you to join me and get behind the TUC to make a difference in our local communities. Together, we can drive positive change in our own backyard by supporting equitable access to higher education and enriched learning experiences.

Mayor Rod Marti
Tablelands Regional Council

TOGETHER WE CAN

support regional, rural
and remote students'
participation and
success in tertiary
education.

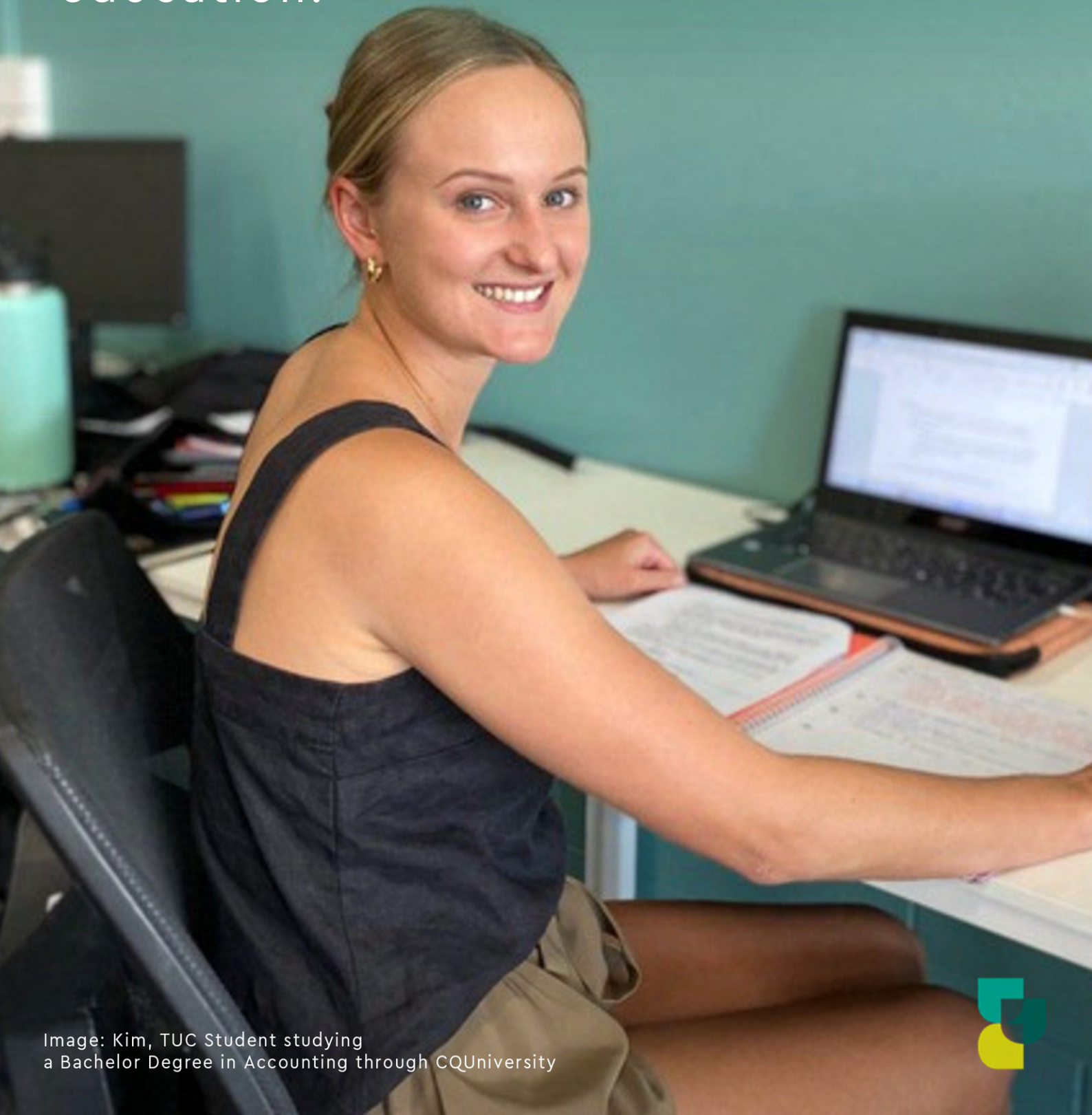


Image: Kim, TUC Student studying
a Bachelor Degree in Accounting through CQUniversity



ABOUT US

VPG

Vocational Partnerships Group (VPG) is a not-for-profit community organisation based in Far North Queensland committed to achieving real and sustainable outcomes for local communities.

For 25 years, we have empowered youth, strengthened families, and brokered partnerships between education and industry by consistently delivering high quality outcomes to our stakeholders: youth, families, industry & communities.

Through the delivery of our services across a wide spectrum of programs, VPG has become one of Australia's leading community partnership brokers, committed to transforming the lives of children, young people & families in the communities we operate.

Firmly embedded within the greater Tablelands region, we deliver holistic wrap around support services to young people and families, ranging from prevention to high level intervention initiatives. We provide seamless, coordinated responses that inspire and connect people with education and employment to ensure active community and economic participation.

TUC

At VPG, we believe regional and rural communities deserve quality opportunities to fulfill their potential without having to relocate. Located at our VPG Service Centre in Atherton, the TUC is spearheading positive change in regional education. Our goal is to ensure that youth and the wider community have access to high-quality post-school opportunities and networks right where they are.

While many local residents have the desire and ability to successfully undertake higher-level tertiary study, various factors often deter or prevent them from doing so, with accessibility playing a big part. In the past, residents have needed to leave the community to pursue education, and are often not returning, contributing to skill shortages across key industries.

We are already seeing the positive impact the TUC is having on students' participation and success in higher education opportunities in the local area. The learning facility provides students with access to a dedicated space to study equipped with technology and resources, a supportive learning environment, including a network of peers, and support staff to enhance their education journey.

Designed to create a collegiate atmosphere, where students can work together and collaborate to achieve their goals, the TUC is investing in student's aspirations, skills and capabilities to build the foundation for education participation.

Equity in learning opportunities for our students is our top priority, and as such, the centre is open to all rural and regional students who are studying university or VET courses online at any Australian institution at no cost.

We believe that every student should have the opportunity to reach their full potential, and we are committed to making that possible.



COLLABORATIVE EFFORT

The TUC is one of 46 Regional University Centres across Australia, forming a collaborative network to boost accessibility of tertiary education in regional, rural and remote areas.



Our University Centres service students across the Tablelands, Mareeba Cassowary Coast.



Image: Jasmine (left), and Sophie (right) pursuing higher education via a bridging course at CQUniversity.



HARNESSING COMMUNITY PARTNERSHIPS

Working in partnership with local industry and community partners, we aim to provide students with the resources, experiences, and connections they require to thrive.

This collaborative approach allows us to create solutions that are tailored to the unique needs of our region, addressing current workforce demands, and ultimately leading to more sustainable participation in education.

We believe that students who are deeply rooted in their local communities are more likely to stay and be a part of the local workforce, which will contribute to the success and prosperity of our region.

Harnessing community partnerships, we can create valuable opportunities for students to engage in work integrated learning experiences, building their social capital and maximising their chances of local economic participation.

In addition to financial donations, in-kind support from our valued community partners will enhance student learning experiences, offering valuable opportunities to gain hands-on experience via work tasters, explore various pathways through industry visits, and gain valuable insights from guest speakers.

By providing these additional opportunities, we aim to bridge the gap between education and employment, ensuring our students are well-prepared for a successful transition into the local workforce.



Image: QPWS Inspiring Vocational Students via Industry Visit



READY

to invest in the
future of education,
innovation, and
economic growth in
our region?



Image: Rhett, local TUC student graduated with an Electrical Engineering degree in 2023.



PARTNERSHIP PROPOSAL

Take an active role in shaping the future of our community.

We're happy to publicly recognise your generosity in a variety of ways that does not constitute material benefit. Examples of this recognition could include:

RECOGNITION OF YOUR GIFT	CHAMPION	ADVOCATOR	COMMUNITY	ALLY	FRIEND
Verbal acknowledgement of your gift at community open days and networking events	●				
Recognition of your gift via media release, social media post, VPG communications	●				
High-visibility placement of logo decal on TUC external window	●	●			
Logo inclusion on key marketing materials	●	●			
Acknowledgement and logo inclusion on TUC website with link to business website	●	●	●		
Digital certificate of appreciation of your gift	●	●	●		
Recognition of your gift in annual VPG stakeholder communication	●	●	●	●	
TUC digital asset for your personal use / recognising your gift	●	●	●	●	●
Invitation to TUC student networking and industry events	●	●	●	●	●
Suggested Gift Amount	\$10,000	\$5,000	\$2,500	\$1,000	\$250

Interested in funding an Education Scholarship?

Options to fund tailored scholarships are available upon request, including naming right opportunities. To discuss, book a meeting today via tuc@vpginc.edu.au

Other Ways to Partner/Give Back

If you're unable to provide a financial gift, but would like to partner or give back in other ways, such as industry visits or guest speaking, we'd love to hear from you at tuc@vpginc.edu.au.

Registered Charity

VPG is a Registered Charity and endorsed as a Deductible Gift Recipient (DGR). VPG will provide you with a donation receipt.



To empower our local communities through education and formalise our partnership, please complete the form below with your company details.

Company Name					
Gift/Donation Type Please tick	<input type="radio"/> Champion \$10,000	<input type="radio"/> Advocator \$5,000	<input type="radio"/> Community \$2,500	<input type="radio"/> Ally \$1,000	<input type="radio"/> Friend \$250
Primary Contact					
Position					
Postal Address					
Street Address					
Phone Number					
Email					
Accounts Contact					
Accounts Email					
Signature					
Date					

This partnership agreement, along with all associated benefits, is valid for a period of 12 months from the date the partnership is formalised.

Please return your form via email: tuc@vpginc.com.au

Thank you for your generosity and support. We look forward to working in partnership with you.





TABLELANDS UNIVERSITY CENTRE

HIGHER EDUCATION SUPPORT BY



To partner with the TUC, or for
further information connect with:

 VPG CEO,
[Maryanne Tranter](#)

 maryanne@vpginc.com.au

 07 4091 6411

 Tablelands University Centre
5a Comet Avenue
Atherton, QLD, 4883